

# Outfit the Nissan Van with the ANT “Euro Style Crane” available thru DEL Hydraulics.

Efficiently Transport Appliances, Equipment, Supplies,  
Boat Motors, Engines, Landscaping  
Equipment and more

Self - contained system: electric over hydraulic

15 year expected life crane boom and structure for added  
strength and dexterity.

Operational capacity: 1100 lbs. at 3' 3" extension  
660 lbs. at 5' 7" extension  
440 lbs. at 8' 1" extension

Easy to remove and install to another vehicle.

Ideal to create a mobile work station.



**MODEL: M50.2H ERS**



**CRANE CAPACITY:** 3700 Ft. Lbs.

**CRANE WEIGHT:** 210 Lbs.

**POWERED CONTROLLED**

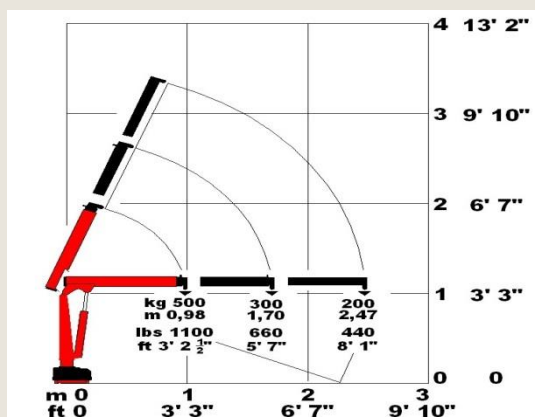
**ROTATION:** 330 Degrees

**SYSTEM:** 12V Electric/ Hydraulic with 2  
hydraulic extensions

**CONTROLS:** Manual hydraulic valves,  
console, security key and stop switch.

**ACCESSORIES:** Electric winch with cable  
remote.

Load handling back attachment



**DEL HYDRAULICS, INC.**

**571 HOWARD STREET**

**BUFFALO, NEW YORK 14206**

**716-853-7996**

**WWW.DELHYDRAULICS.COM**

**Email address: sales@delhydraulics.com**